

# FOR LEASE

## 1365 New Scotland Rd, Slingerlands, NY 12159



Value....through performance



### Details

Building Size: 110,000 Sq. Ft.  
Retail Space Available:

1,462 Sq. Ft.  
1,249 Sq. Ft.  
2,379 Sq. Ft.  
3,988 Sq. Ft. Total Contiguous

- High performing grocery anchored.
- Inline tenants include Empire Vision and Dunkin and outlet developments include Citizen's Bank and a freestanding retail / office building.
- Located on the west side of N.Y.S. Route 85, approximately 4 miles south of Exit 4 off of Interstate 90 in the Slingerlands / Delmar area.
- Rent: Call for pricing.

### Contact Information

**Name:** Gordon Heeps or Alex Kutikov  
Licensed Real Estate Broker - Principal

**Email:** Info@redmarkrealty.com

**Office:** 518.952.7500

**Website:** www.redmarkrealty.com



### Aerial View



### Demographics

	1 mi radius	3 mi radius	5 mi radius
Population	3,479	52,740	144,500
Households	1,489	21,007	61,074
Population Median Age	45.1	39.2	38.9
5 Yr Pop Growth (Total%)	0.2%	-0.1%	0.4%

### 5 Mile Information



**146,887**

Employees



**\$101,586**

Median HH Income



**8,911**

Businesses





For more information, contact:

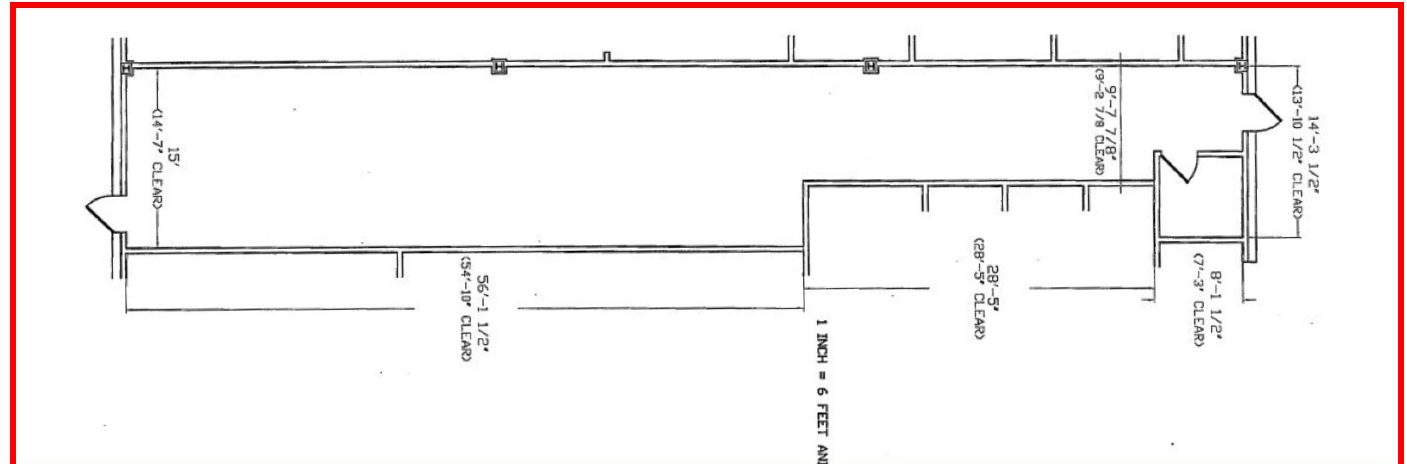
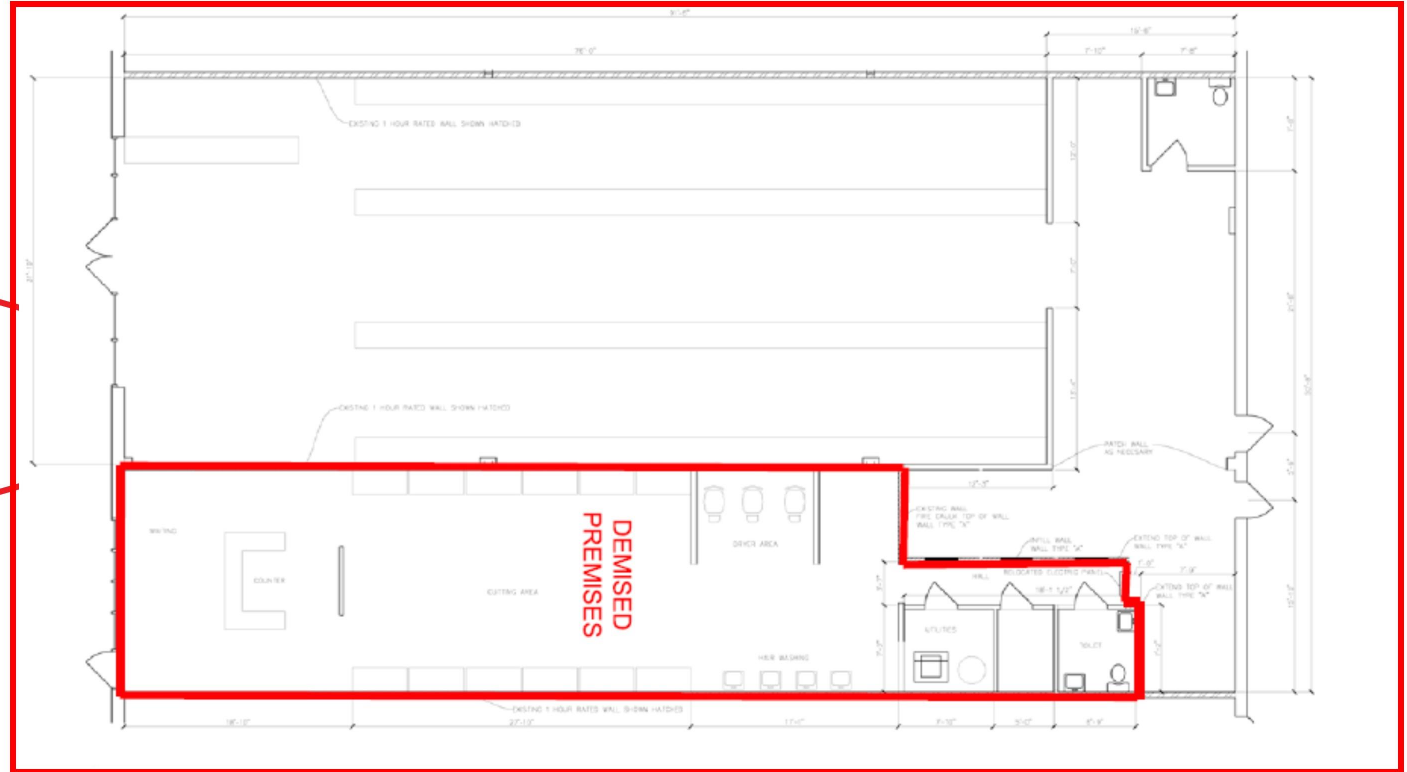
**Gordon Heeps or Alex Kutikov**  
*Licensed Real Estate Broker - Principal*

Office: 518.952.7500  
Info@redmarkrealty.com



*Value....through performance*





Logos are for identification purposes only and may be trademarks of their respective companies.

**For more information, contact:**

**Gordon Heeps or Alex Kutikov**  
*Licensed Real Estate Broker - Principal*

Office: 518.952.7500  
Info@redmarkrealty.com



*Value....through performance*





Map data ©2019 Imagery ©2019, CNES / Airbus, DigitalGlobe, New York GIS, USDA Farm Service Agency

For more information, contact:

Gordon Heeps or Alex Kutikov  
Licensed Real Estate Broker - Principal

Office: 518.952.7500  
Info@redmarkrealty.com



Value....through performance