

FOR LEASE

Walgreens Plaza

New Paltz, NY



BUILDING SIZE: 34,000 SF

AVAILABLE SPACE

○ 1,000 SF

CALL FOR PRICING

PROPERTY INFO

- Great pharmacy-anchored strip center.
- Co-tenants include Walgreens, Subway, H&R Block, The L Salon, Verizon, Allstate, Hudson Heritage Credit Union, and Inner Wall Climbing.
- Services the SUNY of New Paltz with over 6,600 students.

2023 Demographics

	1 Mile	3 Miles	5 Miles
Population	7,735	15,190	23,006
Average HH Income	\$77,665	\$119,660	\$117,247
Est. Adj. Daytime Demographics (16+)	6,548	12,317	16,862

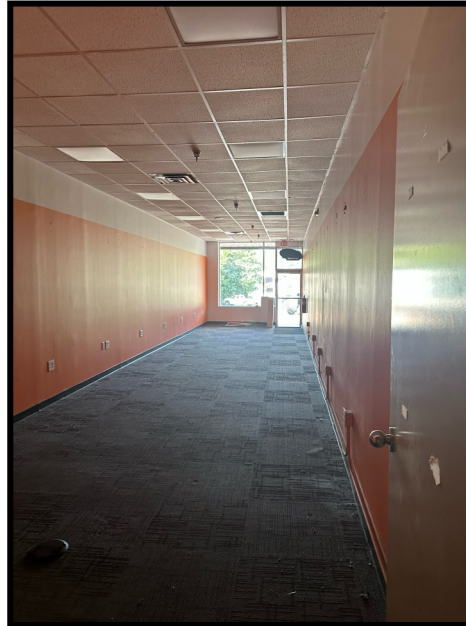
Gordon Heeps, Principal
Licensed Real Estate Broker

Alex Kutikov, Principal
Licensed Real Estate Broker

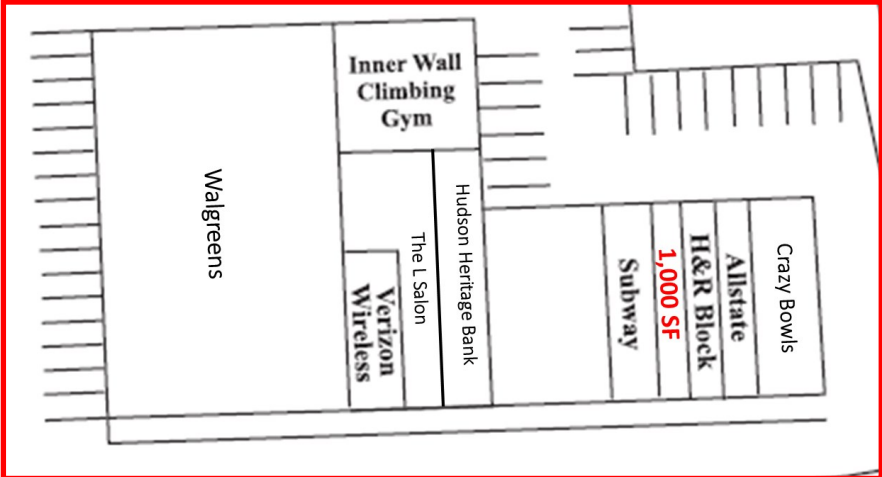
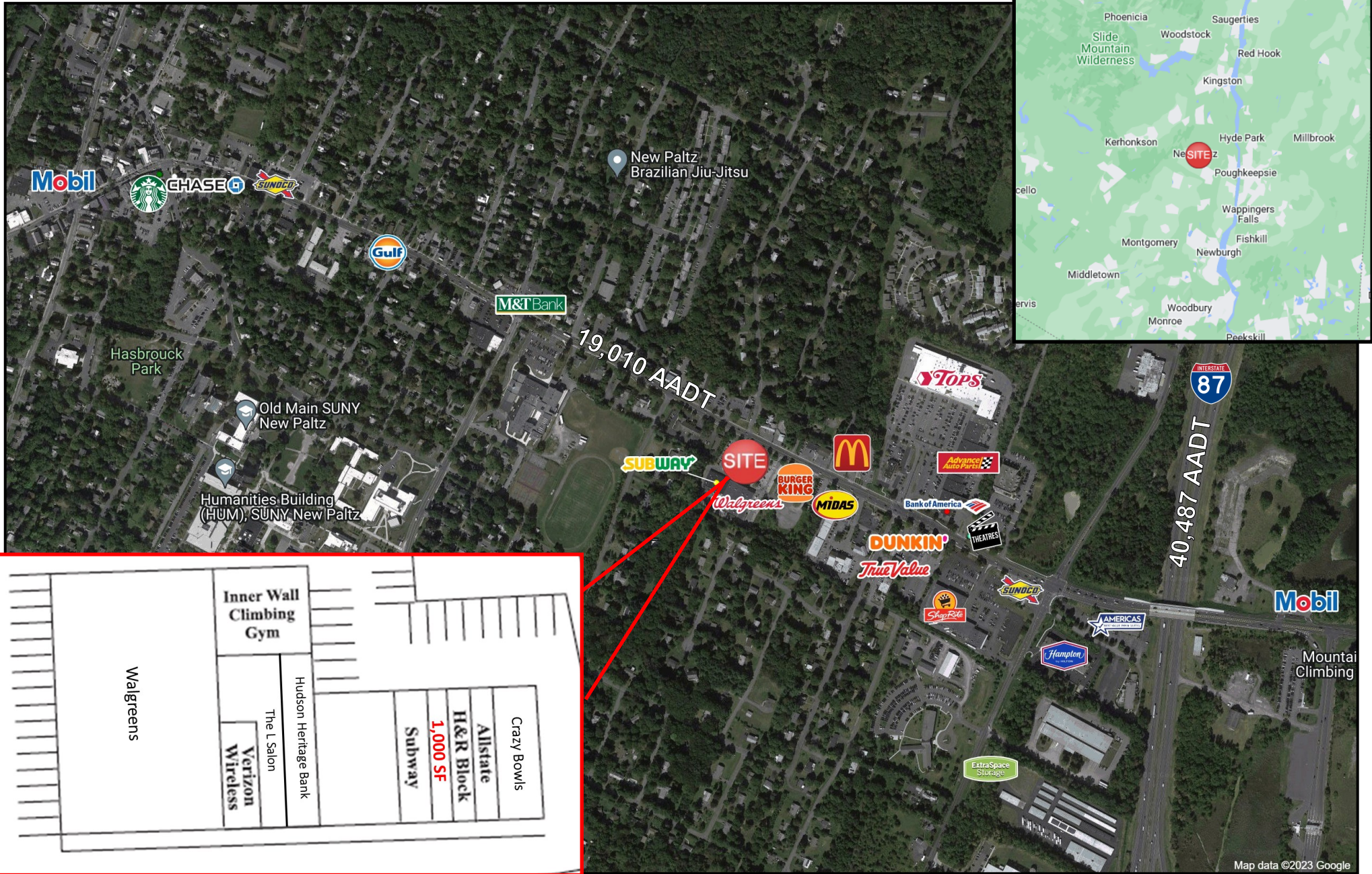


Value...through performance

FOR LEASE | WALGREENS PLAZA | 232 Main St, New Paltz, NY 12561



FOR LEASE | WALGREENS PLAZA | 232 Main St, New Paltz, NY 12561



Gordon Heeps, Principal
Licensed Real Estate Broker

Alex Kutikov, Principal
Licensed Real Estate Broker



Value...through performance