

23 2nd St, Troy, NY 12180



Value....through performance



Details

Lot Size: 8,276 Sq. Ft.
Building Size: 26,783 Sq. Ft.
Available: 5,423 Sq. Ft. Basement
3,886 Sq. Ft. Second Floor
3,972 Sq. Ft. Third Floor
3,880 Sq. Ft. Fourth Floor

Accessible by elevator.
Many windows throughout the offices.
Off-Street Parking.
Call for pricing.

Contact Information

Name: Gordon Heeps or Olivia Huffman
Licensed Real Estate Broker/ Salesperson

Email: Info@redmarkrealty.com

Office: 518.952.7500

Website: www.redmarkrealty.com



Aerial View



Demographics

	1 mi radius	3 mi radius	5 mi radius
Population	14,952	86,945	158,360
Households	7,538	37,415	69,703
Population Median Age	34.3	34.0	37.7
5 Yr Pop Growth (Total%)	2.9%	1.6%	1.0%

5 Mile Information



98,522

Employees



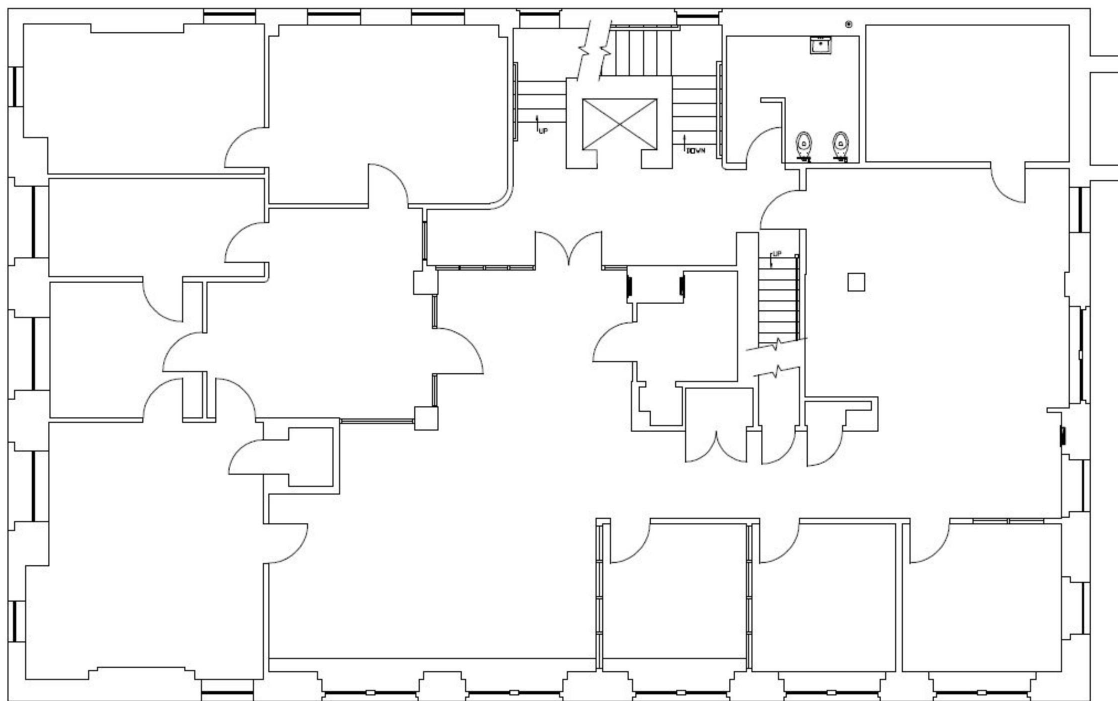
\$64,305

Median HH Income

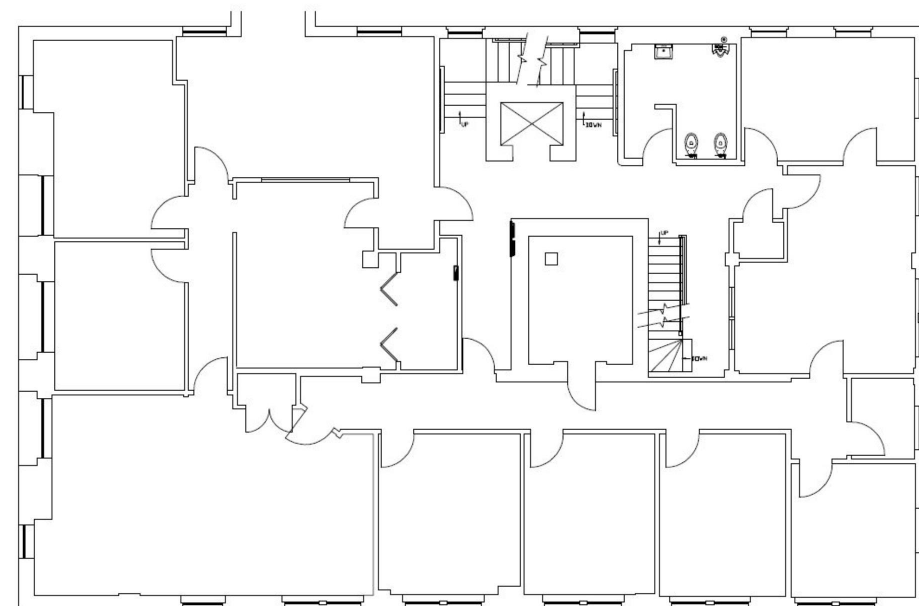


7,004

Businesses



EXISTING SECOND FLOOR PLAN
SCALE: 3/32" = 1' - 0"



EXISTING THIRD FLOOR PLAN
SCALE: 3/32" = 1' - 0"

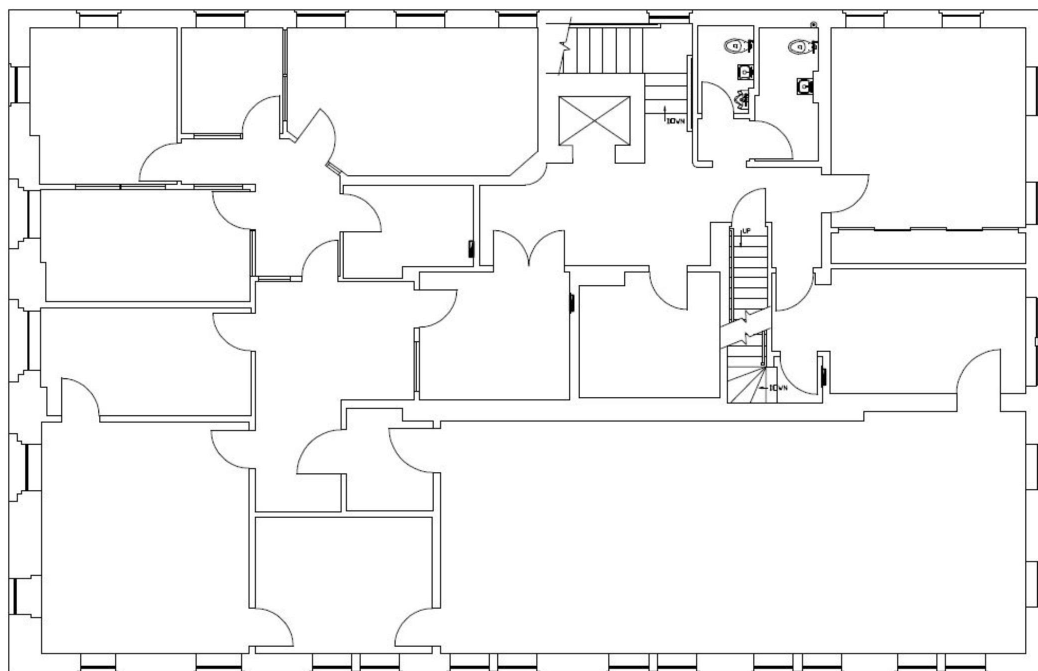
For more information, contact:

Gordon Heeps or Olivia Huffman
Licensed Real Estate Broker/ Salesperson

Office: 518.952.7500
Info@redmarkrealty.com



Value....through performance



EXISTING FOURTH FLOOR PLAN
SCALE: 3/32" = 1'-0"



Logos are for identification purposes only and may be trademarks of their respective companies.

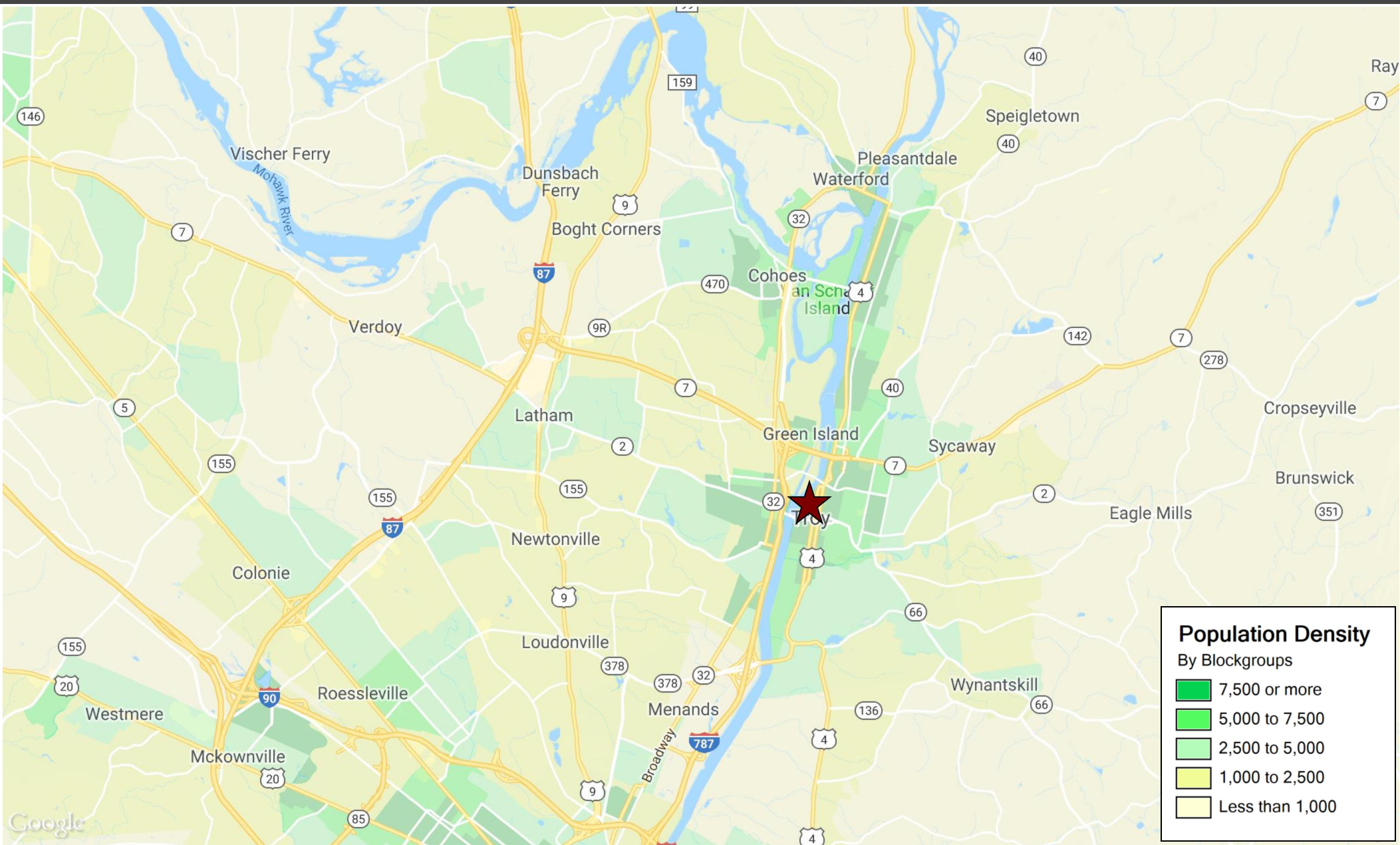
For more information, contact:

Gordon Heeps or Olivia Huffman
Licensed Real Estate Broker/ Salesperson

Office: 518.952.7500
Info@redmarkrealty.com



Value...through performance



For more information, contact:

Gordon Heeps or Olivia Huffman

Licensed Real Estate Broker/ Salesperson

Office: 518.952.7500

Info@redmarkrealty.com



Value....through performance