

FOR LEASE

# Mixed-Use Retail Plaza

1207 Troy Schenectady Road, Latham, NY 12110



## PROPERTY INFO

- Mixed-use building located in Riverhill Center in Latham, NY.
- Built in 2015, this property offers modern features, an attractive façade, a drive-thru, and a patio.
- High visibility on Troy Schenectady Road (Route 7).
- Drive-thru window ideal for a restaurant.

## 2025 Demographics

	1 Miles	3 Miles	5 Miles
Population	1,813	26,574	102,371
Average HH Income	\$171,898	\$144,135	\$143,820
Est. Adj. Daytime Demographics (16+)	3,137	42,140	102,482

## AVAILABLE SPACE

- 1,500 SF with drive thru
- 5,866 SF second floor office

## CALL FOR PRICING

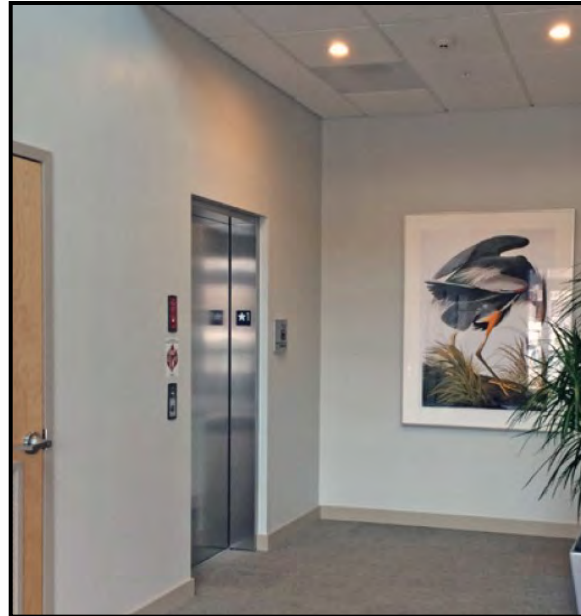
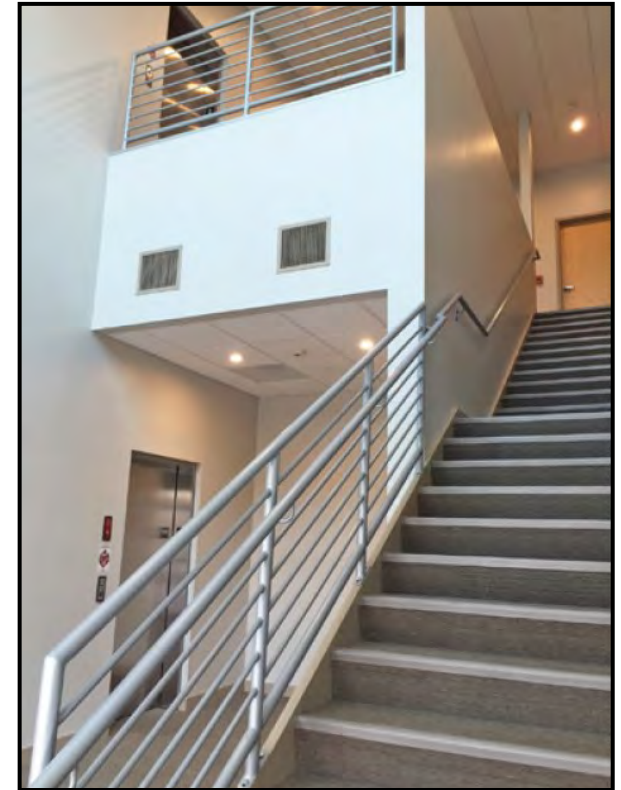
Doug Morabito  
Licensed Real Estate Broker

7 Southside Drive, Suite 200 | Clifton Park, NY 12065 | [www.redmarkrealty.com](http://www.redmarkrealty.com) | 518-952-7500 | [info@redmarkrealty.com](mailto:info@redmarkrealty.com)



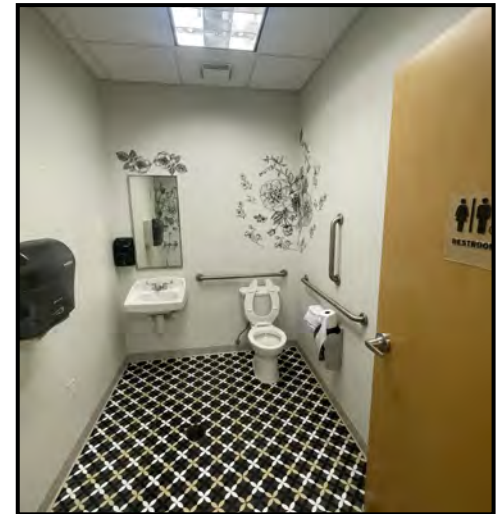
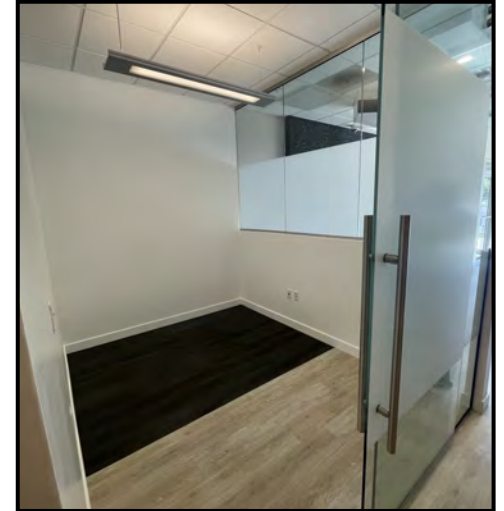
Value...through performance

FOR LEASE | 1207 Troy Schenectady Road | Latham, NY



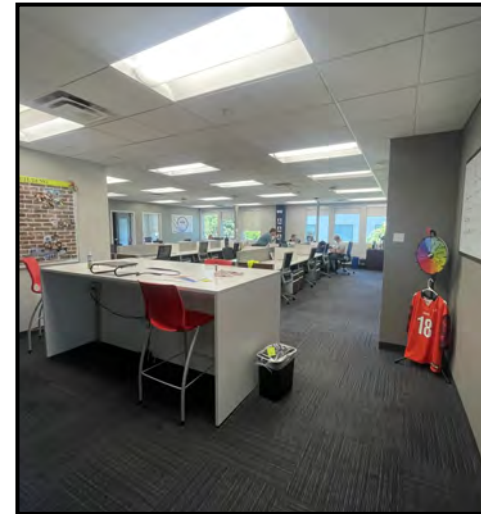
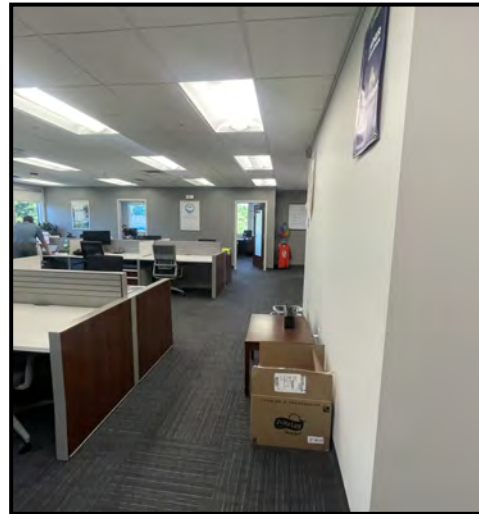
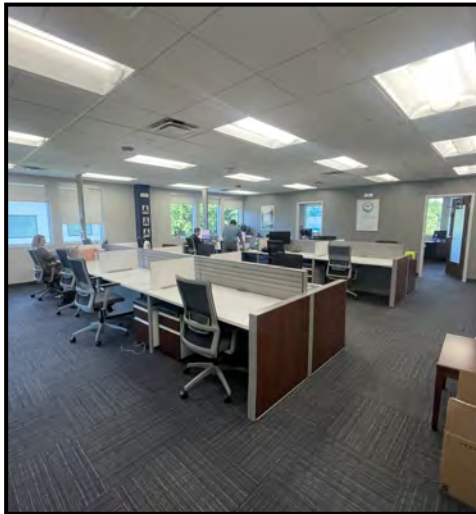
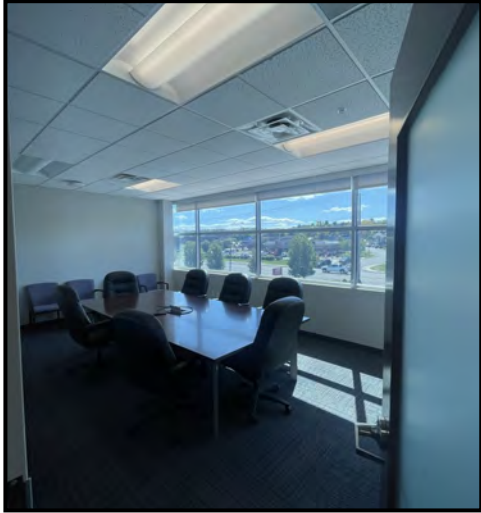
FOR LEASE | 1207 Troy Schenectady Road | Latham, NY

1,500 SF with drive thru



FOR LEASE | 1207 Troy Schenectady Road | Latham, NY

5,866 SF 2nd floor office



FOR LEASE | 1207 Troy Schenectady Road | Latham, NY



Doug Morabito  
Licensed Real Estate Broker

7 Southside Drive, Suite 200 | Clifton Park, NY 12065 | [www.redmarkrealty.com](http://www.redmarkrealty.com) | 518-952-7500 | [info@redmarkrealty.com](mailto:info@redmarkrealty.com)



Value...through performance