

FOR LEASE

Walgreens Plaza

New Paltz, NY



BUILDING SIZE: 34,000 SF

AVAILABLE SPACE

○ 1,000 SF

PROPERTY INFO

- Great pharmacy-anchored strip center.
- Co-tenants include Walgreens, Subway, H&R Block, The L Salon, Verizon, Allstate, Hudson Heritage Credit Union, and Inner Wall Climbing.
- Services the SUNY of New Paltz with over 6,600 students.

CALL FOR PRICING

2025 Demographics

	1 Mile	3 Miles	5 Miles
Population	7,860	14,770	22,451
Average HH Income	\$77,764	\$120,834	\$121,333
Est. Adj. Daytime Demographics (16+)	6,821	12,439	17,269

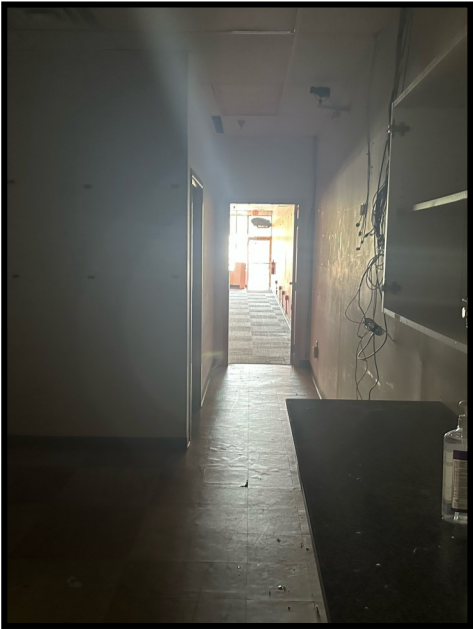
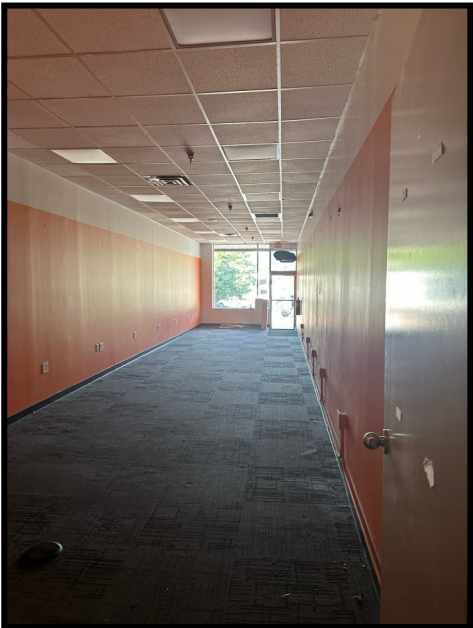
Nathan Marks
Licensed Real Estate Salesperson

Gordon Heeps, Principal
Licensed Real Estate Broker

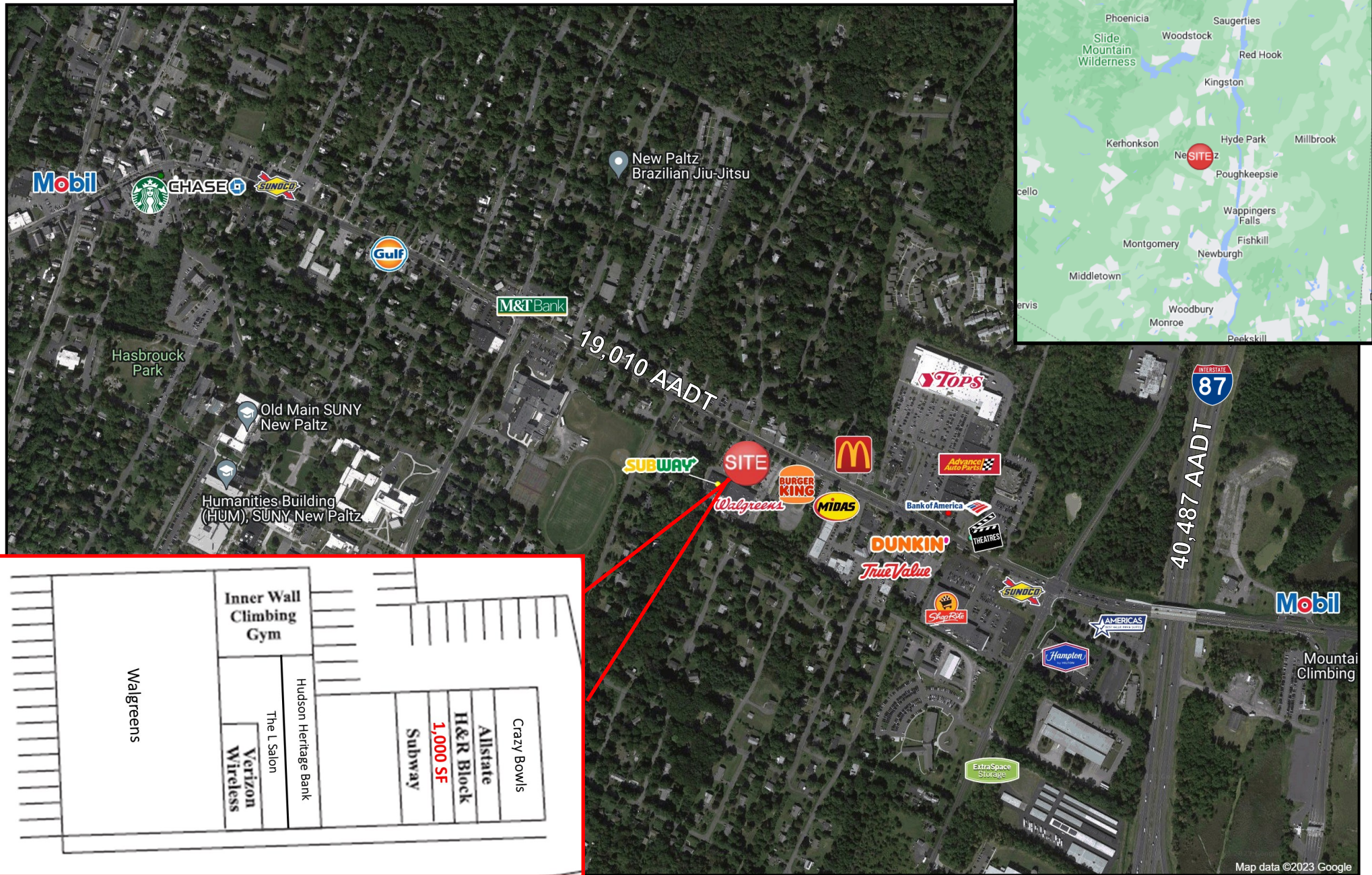


Value...through performance

FOR LEASE | WALGREENS PLAZA | 232 Main St, New Paltz, NY 12561



FOR LEASE | WALGREENS PLAZA | 232 Main St, New Paltz, NY 12561



Nathan Marks
Licensed Real Estate Salesperson

Gordon Heeps, Principal
Licensed Real Estate Broker



Value...through performance

7 Southside Drive, Suite 200 | Clifton Park, NY 12065 | www.redmarkrealty.com | 518-952-7500 | info@redmarkrealty.com