

FOR LEASE

PROPERTY INFO

- Former restaurant space with existing infrastructure in place.
- Prime Loudon Road (Route 9) frontage with excellent visibility.
- Located along a high-traffic retail corridor in Latham.
- Strong co-tenancy and surrounding national retailers driving consistent traffic.
- Easy ingress/egress with direct access to Route 9.
- Close proximity to dense residential neighborhoods and office population.
- Minutes to I-87 providing regional accessibility.
- Strong demographics with high household income and daytime population.



Turnkey restaurant space located along high-traffic retail corridor in Latham.

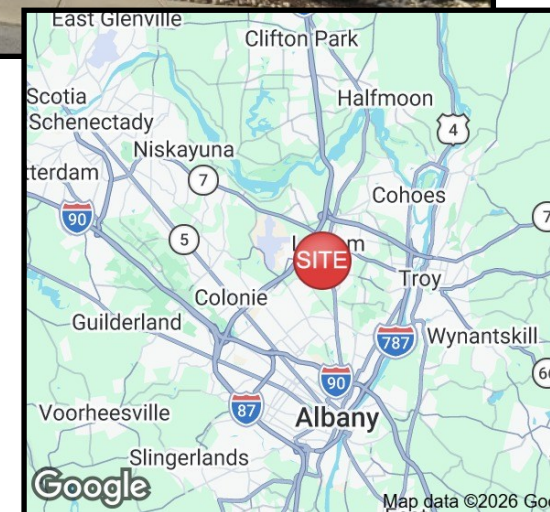
AVAILABLE SPACE

- 5,906 SF

CALL FOR PRICING

2026 Demographics

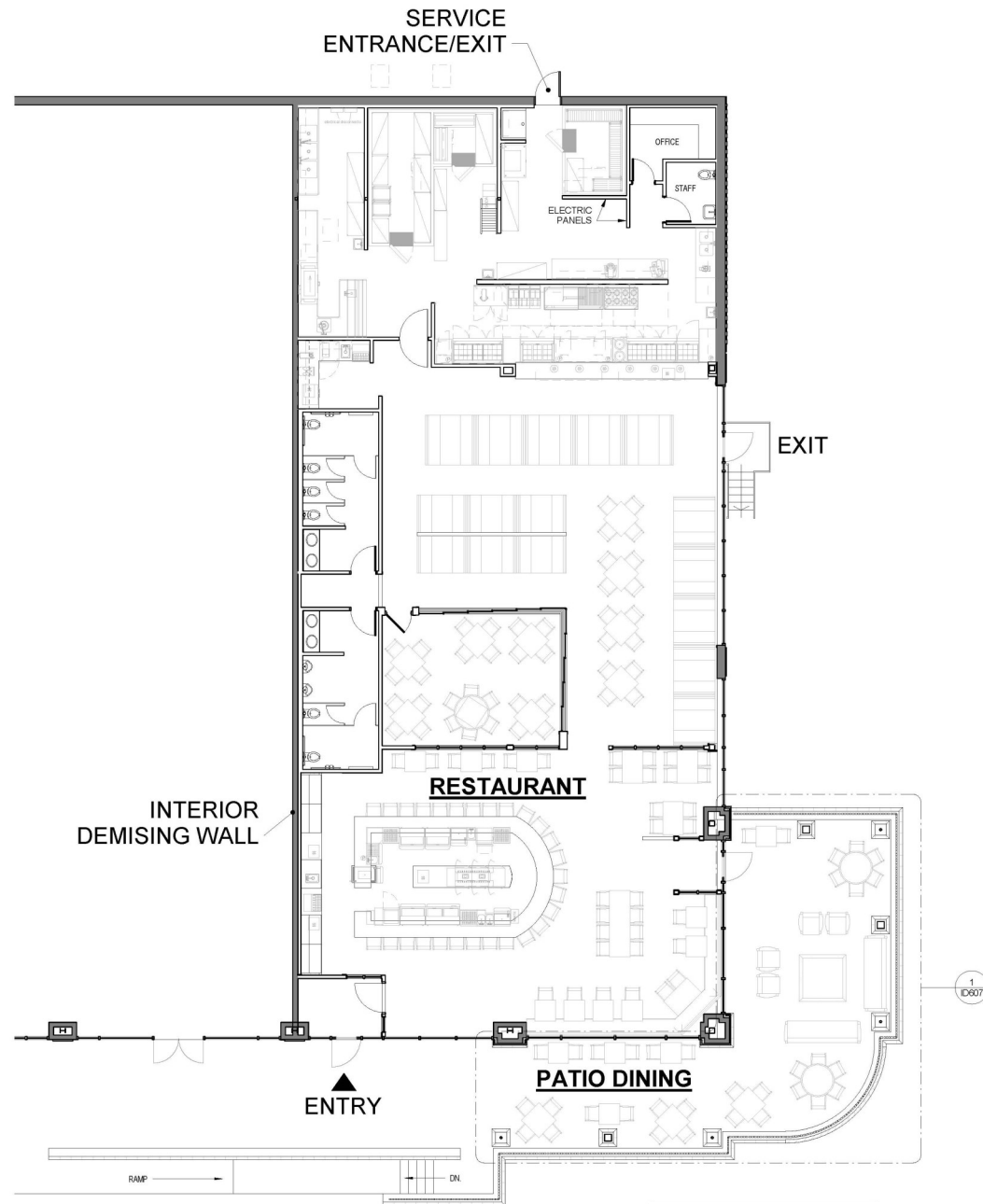
	1 Miles	3 Miles	5 Miles
Population	7,714	48,771	185,298
Average HH Income	\$135,769	\$140,317	\$106,631
Est. Adj. Daytime Demographics (16+)	5,156	44,339	165,974



Doug Morabito
Licensed Real Estate Broker



Value...through performance



1 OVERALL PLAN
1/8" = 1'-0"



